

Epigraphy and Numismatics of South Asia with special references to Bengal (Muslim Period)

Course code: ARC-323

Title breaking

Epigraphy and Numismatics of South Asia with special references to Bengal (Muslim Period)

Epigraphy is the study of written epigraph or Inscription for example Sultan Barbak shah's Coin inscription, Behistan Inscription etc

Bangladesh, India, Bhutan, Nepal, Sri Lanka, Pakistan, Maldives, Afghanistan

Bangladesh, West Bengal, Vihar, Urisha, Asam and others

AT M. Webs Dic. the study or collection of coins, tokens, and paper money and sometimes related objects (such as medals) An area of *numismatics* that has increased in popularity and value is paper money.—Quoc Nguyen

After 1206 CE Sultanate, Mughal, Nawab until British Colony.

Differences among Inscription, Epigraph, Numismatic

শিলালিপি

On metal/ rock

লিপি

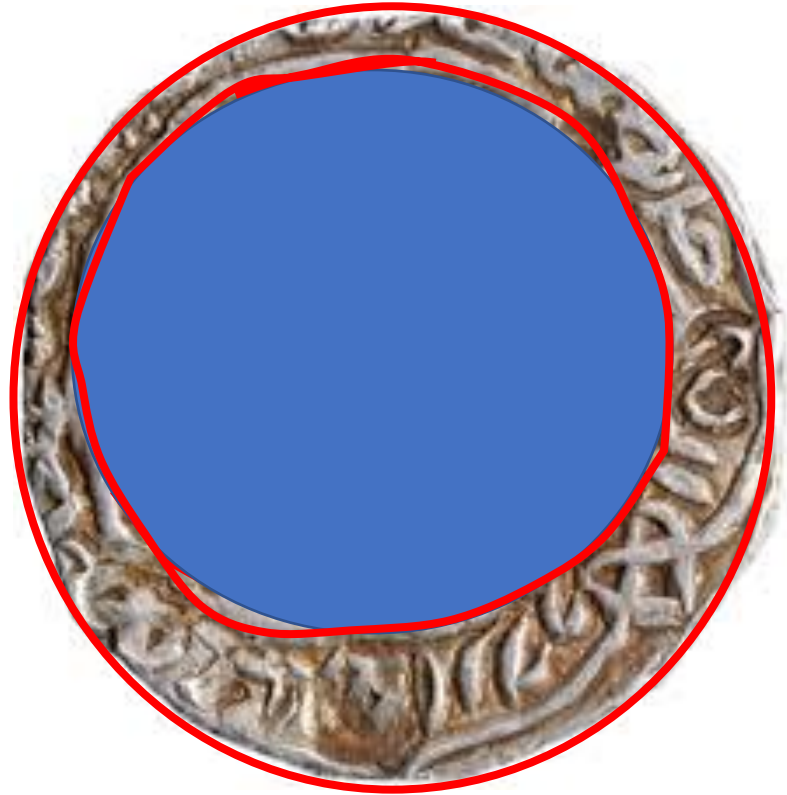
On any hard objects such as
Paper, Metal, Precious metal etc.

মুদ্রাসংক্রান্ত

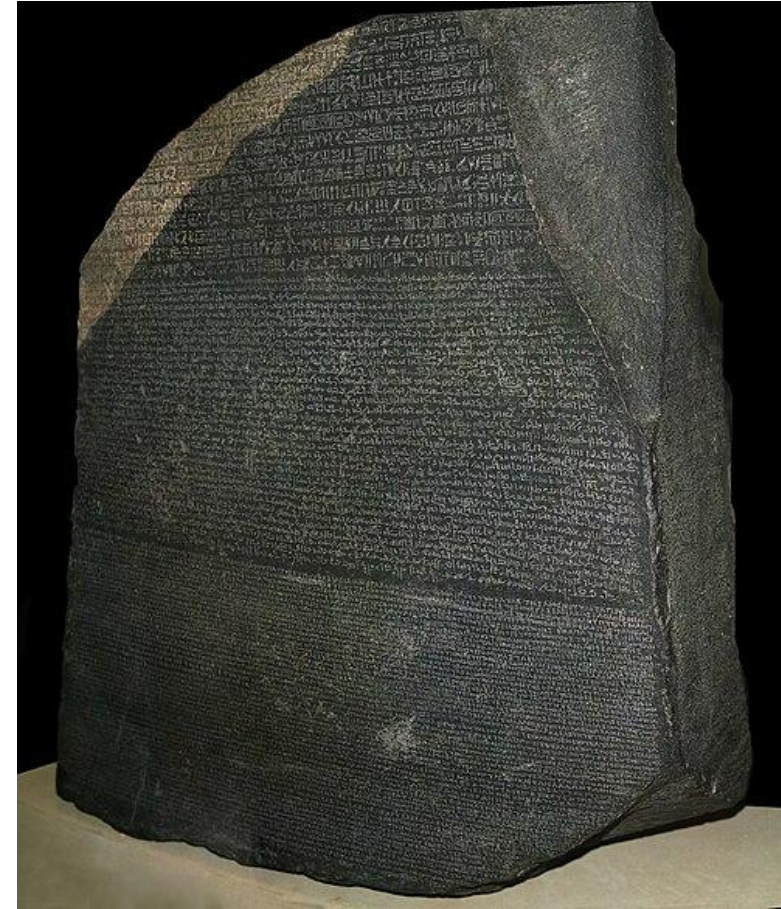
Something about coin and
coinage

Should it be an assignment?

Epigraphy in Coin



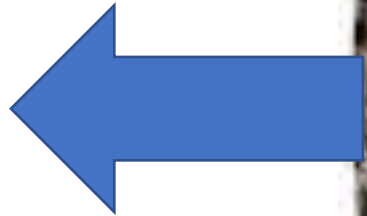
Well known Epigraphical Instance



1799-French soldiers during Napoleon's campaign in Egypt, with French officer Pierre-François Bouchard.

Numismatics and Epigraphy: Deciphering

La Ilaha Illallahu
Muhammadur
Rasulullah



Language or Script of the Medieval Epigraph and Numismatics

Evolution & Media:

- Early Period:** Primarily Kufic in Arabic for official/religious monuments.
- Medieval Period:** Introduction of vernaculars (Persian, Turkish) and cursive scripts for secular art, poetry, and personal statements.
- Media:** Ranged from stone (monuments, tombs) and metal to ceramics, textiles, and paper, often illuminated.

Scripts & Styles:

- Kufic:** The oldest, angular script, used in early Islamic epigraphy for monumental texts.
- Cursive Scripts (Naskh, Thuluth, Maghrebi):** Developed from Kufic, becoming dominant in medieval times for decorative and monumental work.
- Local "Bow and Arrow" or "Swan" variety of Tughra**
- Maghrebi Script:** A distinct cursive style used in North Africa and Andalusia, often as a "dynastic brand".
- Bengal and Prakrit Script**

Language:

- Arabic, Persian (New Persian), Ottoman Turkish:** Became standard under the Ottomans from the 13th century.
- Other Vernaculars:** Urdu, Chinese, Spanish, Hebrew, and more appeared in Islamic calligraphy on various media.

Image of Some Script of Muslim Inscriptions Thuluth



Image of Some Script of Muslim Inscriptions Tughra

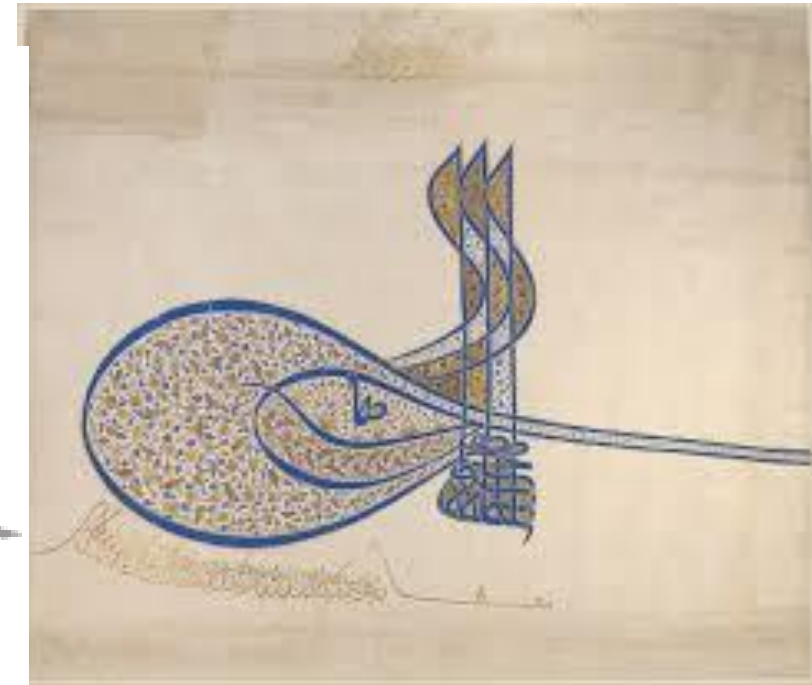
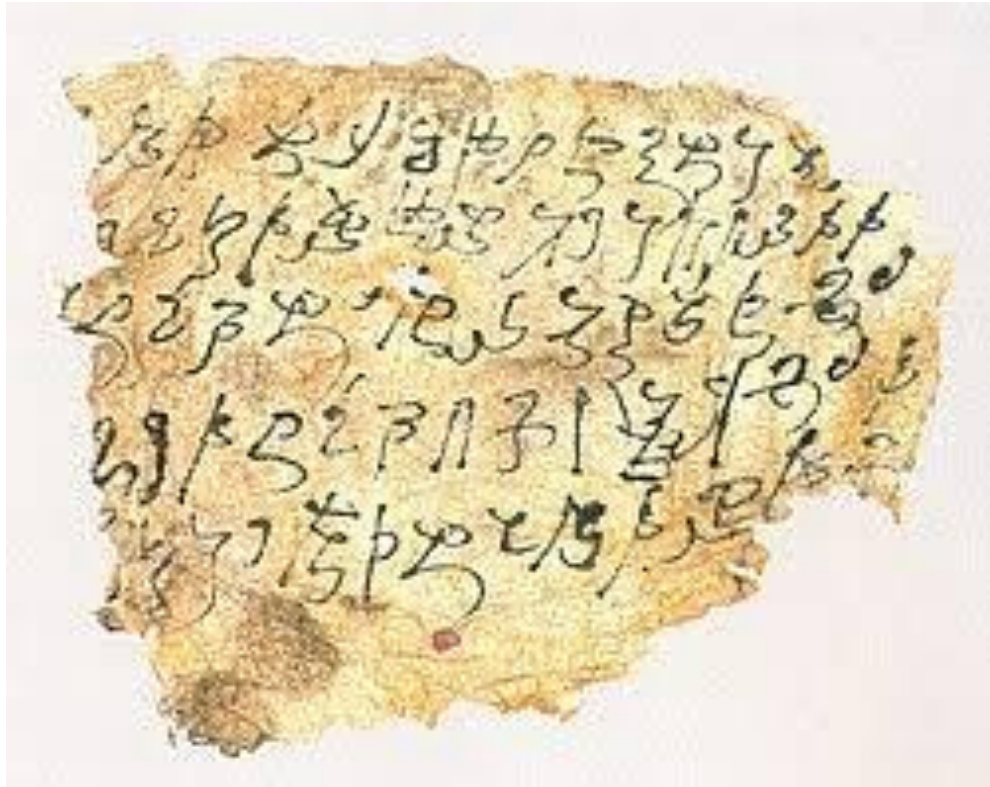


Image of Some Script of Muslim Inscriptions Kufic/Kufik



Image of Some Script of Muslim Inscriptions Khorosthi



𑀓	𑀔	𑀕	𑀖	𑀗	𑀘	𑀙	𑀚	𑀛	𑀜	𑀝
ক	খ	গ	ঘ	নাই	চ	ছ	জ	ঝ	নাই	
𑀞	𑀟	𑀠	𑀡	𑀢	𑀣	𑀤	𑀥	𑀦	𑀧	𑀨
ট	ঠ	ড	ঢ	ণ	ত	থ	দ	ধ	ন	
𑀩	𑀪	𑀫	𑀬	𑀭	𑀮	𑀯	𑀰	𑀱	𑀲	𑀳
প	ফ	ব	ভ	ম	য়	র	ল	অন্তস্থ	ব	
𑀴	𑀵	𑀶	𑀷	𑀸						
শ	ষ	স	য	হ						

Image of Some Script of Muslim Inscriptions Trihuta (Not Medieval Instance)



Vowels and vowel diphthongs

अ	आ	इ	ई	उ	ऊ	ए	ऐ	ओ	औ
ॐ	ॐ	ॐ	ॐ	ॐ	ॐ	ॐ	ॐ	ॐ	ॐ
[a]	[aː]	[ɪ]	[iː]	[u]	[uː]	[e]	[eɪ]	[o]	[oɪ]

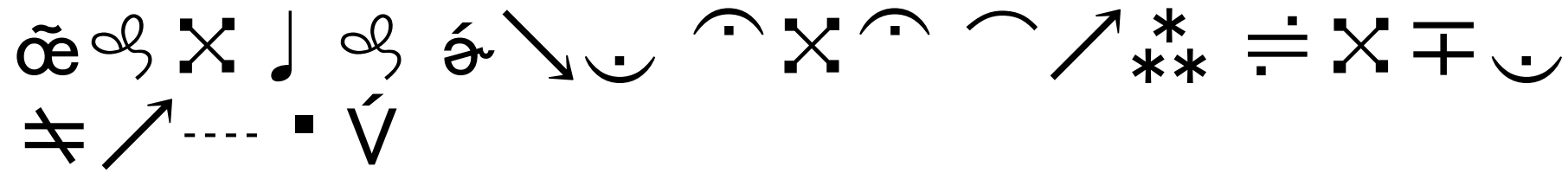
Consonants

क	ख	ग	घ	ङ	च	छ	ज	झ	ञ	ट	ठ	ड	ढ	ण	त	थ	द	ध	न	प	फ	ब	भ	म
[k]	[kʰ]	[g]	[gʰ]	[ŋ]	[tʃ]	[tʃʰ]	[dʒ]	[dʒʰ]	[ɟ]	[ʈ]	[ʈʰ]	[ɖ]	[ɖʰ]	[ɳ]	[t]	[tʰ]	[d]	[dʰ]	[n]	[p]	[pʰ]	[b]	[bʰ]	[m]
[k]	[kʰ]	[g]	[gʰ]	[ŋ]	[tʃ]	[tʃʰ]	[dʒ]	[dʒʰ]	[ɟ]	[ʈ]	[ʈʰ]	[ɖ]	[ɖʰ]	[ɳ]	[t]	[tʰ]	[d]	[dʰ]	[n]	[p]	[pʰ]	[b]	[bʰ]	[m]

ॐ	ॐ	ॐ
anusvara	viraga	viram
[ː, ː, ː, ː]	[ː]	removes inherent vowel

Numerals

०	१	२	३	४	५	६	७	८	९
0	1	2	3	4	5	6	7	8	9



Which One Do You Like Most?

If you were a Professor/Lecturer, what Questions would you make/ask for exam on the previous class?

Lets make Some Question!

Turkish Influence in Medieval Bengal Epigraphy

Background: Turkish general Muhammad Bakhtiyar Khalji's-Later, the Ilyas Shahi dynasty (Turkic)- and Later

Language Acculturation: The long period of Turkic rule and settlement led to a significant exchange of culture and language. The Bengali language still uses many words of Turkish origin, such as *barood* (gunpowder), *nishaan* (flag/sign), *chaku* (knife), *bahadur* (brave), *chadar* (sheet), *surma* (kohl), *bavarchi* (cook), *kiyma* (minced meat), and *korma* (a type of curry).

•Epigraphy: The inscriptions found in Bengal from the Sultanate period are primarily in Arabic and Persian, featuring a diversity of calligraphic styles such as Thulth, Naskh, and a local "Bow and Arrow" or "Swan" variety of Tughra. A famous inscription at the Imam Ali Shrine in Najaf is known to have Turkish text, but this is a separate artifact from those found in Bengal.

Differences between Epigraphy and Calligraphy

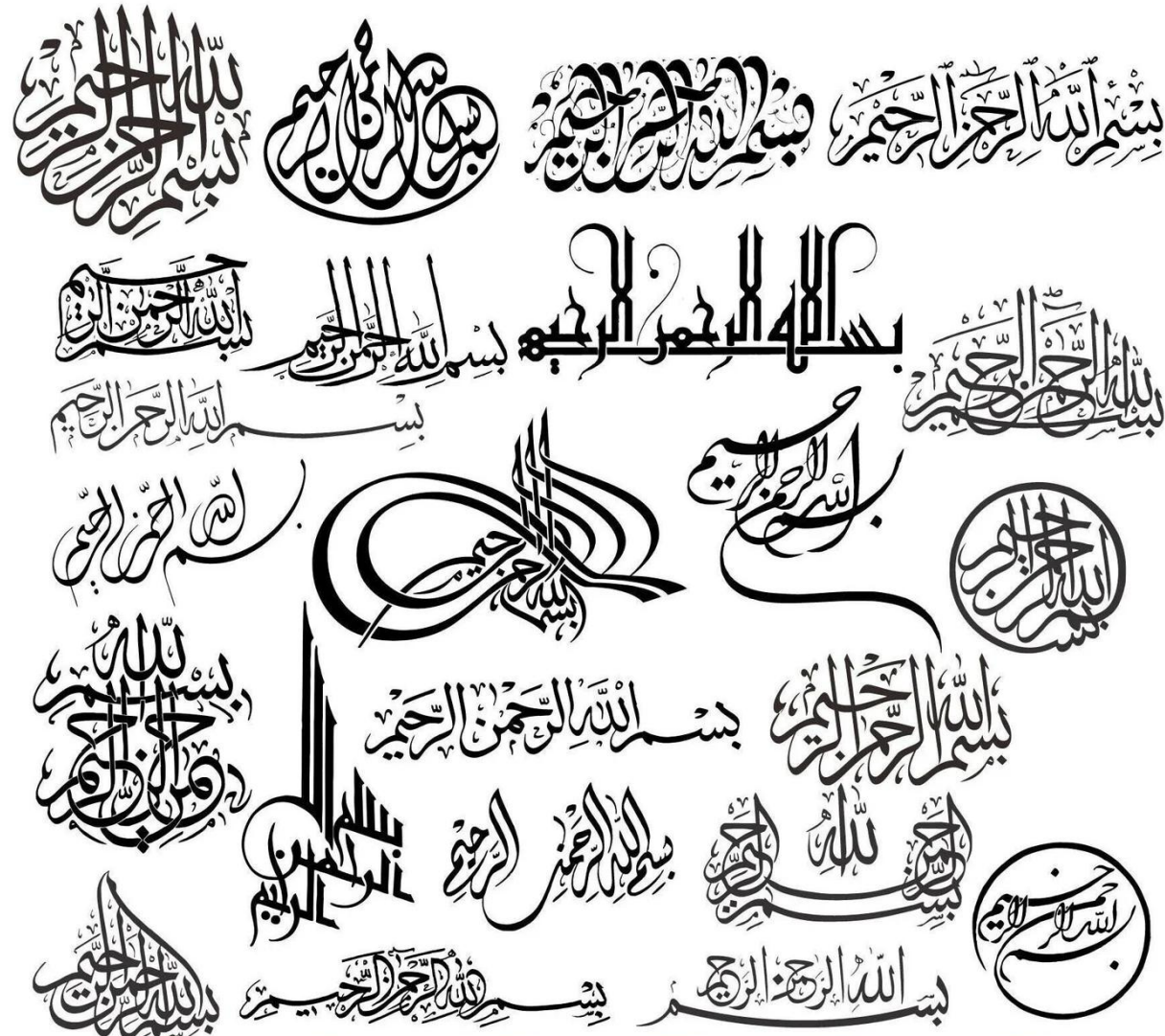
	Epigraphy	Calligraphy
Focus	Science and study of inscriptions (epigraphs).	Visual art of decorative handwriting
Materials	Durable surfaces like stone, metal, clay	Designing and executing letters with rhythm and style, often serving as a model for epigraphic carving.
Purpose	Deciphering, dating, classifying, and interpreting ancient writings for historical/cultural insight.	Aesthetic beauty, artistic expression, creating visually pleasing scripts.
Method	Involves analyzing chiseled, stamped, or incised texts.	Designing and executing letters with rhythm and style, often serving as a model for epigraphic carving.

Similarity between them

Calligraphy often precedes epigraphy; calligraphers design monumental inscriptions that are then transferred to stone.

An inscription's artistic style (calligraphy) influences its interpretation (epigraphy), but the fields remain distinct.

Arabic Calligraphy



- JPG
- PDF
- PNG
- SVG
- DXF
- EPS

Medium and Finding spot of Medieval Epigraph

Medium

Rocks

Coins

Folk Monuments

Paper

Wood

Rugs

Finding Spot

On the wall of religious building

Deeds

Folk and Secular Monuments

And Lets find what other medium and finding spots are?

Characteristics of Medieval Epigraph

Let`s search from the references what was those characteristics?

Language:

Medium:

Script

Subject:

Purpose:

Should it be an Assignment?

Differences among Inscription, Epigraph, Numismatic

শিলালিপি

On metal/ rock

লিপি

On any hard objects such as
Paper, Metal, Precious metal etc.

মুদ্রাসংক্রান্ত

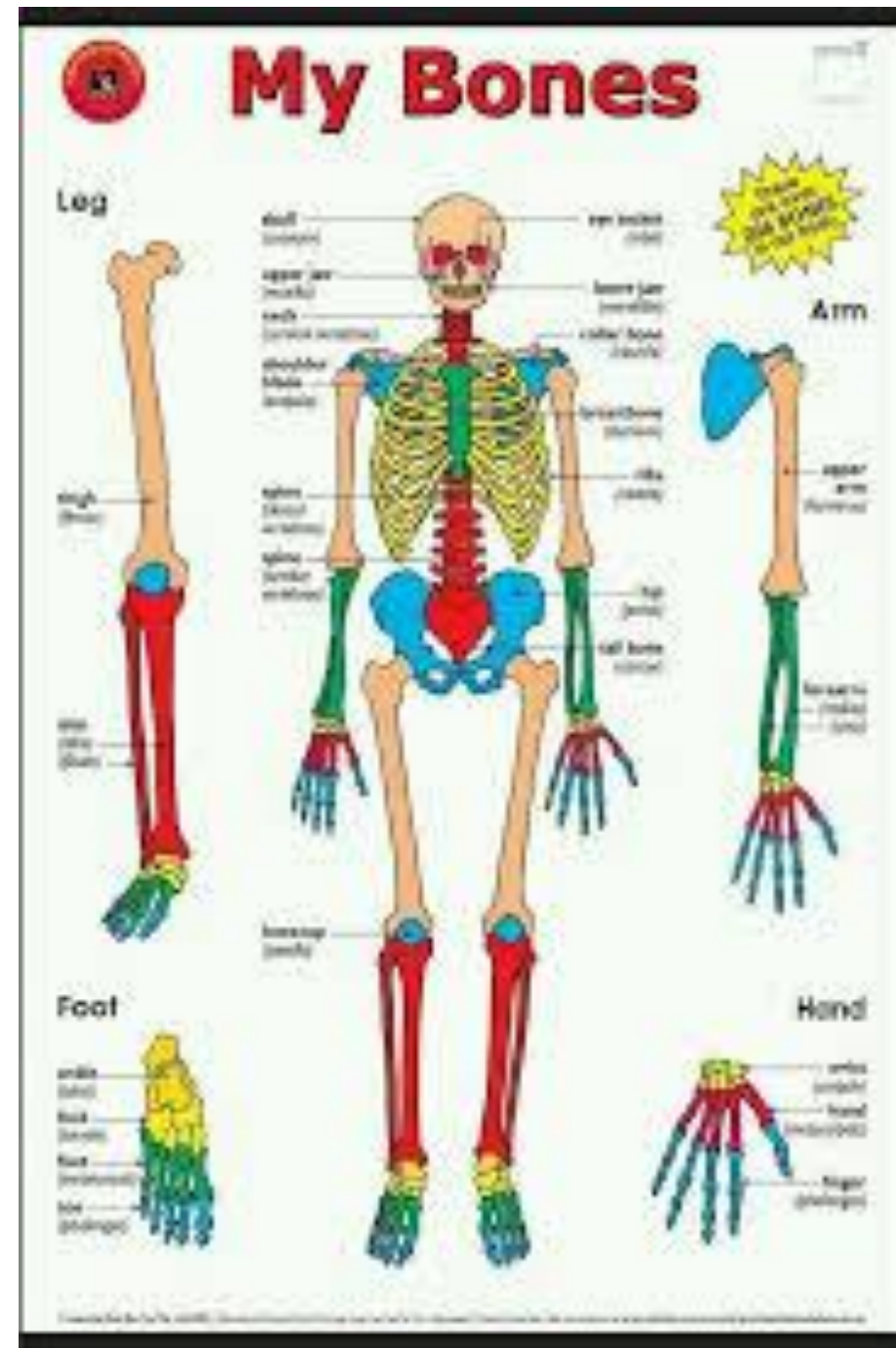
Something about coin and
coinage

Should it be an assignment?

Anatomy



shutterstock.com - 2588474051



Coin Anatomy

Coin Anatomy:

Obverse/Heads: The "heads" or face/front side of a coin, which normally depicts the national emblem or the head of a prominent person.

Reverse/Tails: The "tails" side of a coin, usually depicting the chosen design.

Rim: The raised portion that runs around the perimeter of a coin.

Motto: a word, sentence or phrase inscribed on a coin to express a guiding national principle. For example, "E Pluribus Unum" inscribed on all U.S. circulating coins is Latin for "out of many, one."



Coin Anatomy

Mint: Where the coin was minted (may be different than the issuing country).

Legend: A coin's legend is the principal lettering or inscription, typically running along the outer circumference (border) of the obverse or reverse side

A) the Government Branch where coins are printed,
B) Uncirculated (brand new), or C) the act of making a coin.

Field: The flat part of the coin (the background) on which the relief is drawn and engraved.

Mintmark: Symbol, letters or monogram that indicate the mint where the coin was struck.

Edge: The outer border of a coin, considered the "third side." May be plain or serrated (also known as "reeding").

Designer`s Initials: The person who engraves the design of a coin onto the die.



Coin Anatomy

Date: The year the coin is released

Device/Design:

Denomination: The different values of money. U.S. coins currently are made in the following six denominations: cent, nickel, dime, quarter, half dollar and dollar.

Relief: The raised or three-dimensional image found on a coin's field.

Bust:

Face value: The nominal value of the coin (not what you paid for it).

The issuing Authority: The country where the coin is issued. In Medieval it was called by “Takshal” টাকশাল



Coin Anatomy

The Portrait: Like today, Roman coins had portraits on them. However, these did not always look the same, and some emperors minted coins with their wives or other family members on the portrait.

The Exergue: Some coins have a separate area for text on their reverse (the ‘tails’ side). This area is called the exergue, and it often has information about the person responsible for minting the coin or, as in the example above, who the coin was made for.

The Border: Many coins have a border, a circle of dots around the edges. However, because it is quite hard to mint a coin perfectly, you may notice that many of the coins in this collection do not have a complete border. This is often due to mistakes made by the coin-producers.



Historical Background of Muslim Epigraphy

- The word علم الآثار *athar*, which can be found in the Qur'an in several places, is used in modern Arabic to mean archaeology. Specific verses where this concept is mentioned include:
 - Surah Ar-Room (30:9):
 - Surah Ghafir (40:21):
 - Surah Yunus (10:92):
 - Surah Al-Hijr (15:76):
 - Surah Ash-Shu'ara (26:128-129) and (26:139):
- In some regions, a rich tradition of inscribing **on stone existed even before the advent of Islam**.
- Ibn Ishaq, for instance, mentions about a number of **Syriac inscriptions** which were unearthed while **Ka'ba was demolished for reconstruction when the Prophet** was about **thirty five years** of age.

Origin and Development of Muslim Epigraphy

- Inscriptions were used in Islamic culture since the formative period of Islam date 1st/7th century.
- As a result, epigraphic records and inscriptions are plentiful in terms of both artistic merit and historical information.
- Until the fourth/**eleventh century, most appeared on the inside of buildings.**
- After that century, however, inscriptions began to be used to **decorate the exterior of buildings as well.**
- During this period, the two styles of inscriptions, the cursive **naskh** and **thulth**, started to gain in popularity while use of the angular style known as **Kufi (angular)** declined.
- Calligraphic panels often constitute the most decorative elements in an Islamic building.
- in some buildings, the calligraphic panels are placed too high to be deciphered, suggesting that their aesthetic impact was more important than the textual message.
- In fact many early *Kufi* inscriptions and some Bengali *tughra* (a highly intricate and stylized form of calligraphy) inscriptions from the Sultanate period in Bengal are almost indecipherable, again suggesting that aesthetics were more important than content.

Methods of Epigraphic Studies

The Presentation of Inscriptional Texts

5.1.1 Reproduction of the original inscription

5.1.2 Presentation of the edited text

5.2 Translation and Interpretation of Inscriptions

5.3 Authentication of Inscriptions

5.4 Dating of Inscriptions

5.4.1 Undated or inadequately dated inscriptions; paleographic dating and problems thereof

5.4.2 Dated inscriptions

5.4.2.7 Year dates

5.4.2.2 Specific dates

5.4.3 Conversion and verification of inscriptional dates

5.4.3.1 Conversion of years of Indian eras into dates of the Christian era

5.4.3.2 Conversion and verification of specific dates

5.4.3.3 Technical note on tithis

5.5 Appendix: Eras Used in Indo-Aryan Inscriptions

5.5.1 Continuous (historical or pseudohistorical) eras

5.5.1.1 Kaliyuga era of 3102 B.C.

5.5.1.2 "Old Saka" era (epoch uncertain)

5.5.1.3 Vikrama era of 58 B.C.

5.5.1.4 Saka era of A.D. 78

5.5.1.5 Kalacuri-Cedi era of ca. A.D. 248

5.5.1.6 Gupta-Valabhi era of A.D. 319

5.5.1.7 Ganga (Gangeya) era of ca. A.D. 498 (?)

5.5.1.8 Harsa era of A.D. 606

5.5.1.9 Bhatika era of A.D. 624

Methods of Epigraphic Studies

5.5.1.10 Kollam era of A.D. 824

5.5.1.11 Bhauma-Kara era of A.D. 831 (?)

5.5.1.12 Nepali or Newari era of A.D. 879, and other eras of Nepal

5.5.1.13 Calukya-Vikrama era of A.D. 1076

5.5.1.14 Simha era of A.D. 1113

5.5.1.15 Laksmanasena era of A.D. 1178 (?)

5.5.1.16 Other historical and pseudohistorical eras

5.5.1.17 Phantom eras

5.5.2 Cyclical (astronomical) eras

5.5.2.1 Saptarsi era

5.5.2.2 Twelve-year cycle of Brhaspati (Jupiter)

5.5.2.3 Sixty-year Cycle of Brhaspati (Jupiter)

Methods of Epigraphic Studies

- 1. The Presentation of Inscriptional Texts**
- 2. Translation and Interpretation of Inscriptions**
- 3. Authentication of Inscriptions**
- 4. Dating of Inscriptions**

The Presentation of Inscriptional Texts

It divides into 3 other parts:

1. Eye copies
2. Mechanical Reproduction
3. Photographic copies

Experimental ARC on Method of ES

Take some coins
Fresh white paper

Pressure tools like Rubber, Pencil,
Pen

Make a coin impression on the paper
rubbing



Historical Background of Muslim Epigraphy

- The word علم الآثار *athar*, which can be found in the Qur'an in several places, is used in modern Arabic to mean archaeology. Specific verses where this concept is mentioned include:
 - Surah Ar-Room (30:9):
 - Surah Ghafir (40:21):
 - Surah Yunus (10:92):
 - Surah Al-Hijr (15:76):
 - Surah Ash-Shu'ara (26:128-129) and (26:139):
- In some regions, a rich tradition of inscribing **on stone existed even before the advent of Islam**.
- Ibn Ishaq, for instance, mentions about a number of **Syriac inscriptions** which were unearthed while **Ka'ba was demolished for reconstruction when the Prophet** was about **thirty five years** of age.

Historical Background of Muslim Epigraphy

- Indo Muslim epigraphs are available in South Asia in the last decade of 12th CE
- The Earliest epigraph was found in Qutub premises
- Largest amount of inscriptions was found in 16th and 17th Century
- Madras is the lowest and Punjab, Uttar Pradesh, Bengal, Mombay and Haydrabad are the places where found highest amount of Epigraphs.
- Very few amount of copperplates found in Muslim era

Historical Background of Muslim Epigraphy

- Until the fourth/**eleventh century**, most appeared on the inside of buildings.
- After 4th/11th century, however, inscriptions began to be used to **decorate the exterior of buildings as well**.
- During this period, the two styles of inscriptions, the cursive **naskh** and **thulth**, started to gain in popularity while use of the angular style known as **Kufi (angular)** declined.
- Calligraphic panels often constitute the most decorative elements in an Islamic building.

Historical Background of Muslim Epigraphy

Early inscriptions shows the message, asking Allah`s assistance in all expeditions.

Assams Kamrup inscription and it`s first expedition history in Local language

Medieval Inscription was started in form of coin and monetary chain but in different form changed later on.

Earliest coin inscription was more rough, uneven, jagged but smoother and sharper later on.

Try to find out more from references

The History of Indian Epigraphic Studies

Review Previous classes from Ancient Epigraphy of India

References:

Assignments

Instructions for the Assignments

1. No page limitations but not irrelevant writings.
2. No direct AI copy-paste better try not to use AI for any purpose but you can use to paraphrase the English sentences and translation as this is your first time in foreign language.
3. For printing you can print the both side for make it cheap and easy to print.
4. Only editable pdf file is accepted. Font: Times New Roman and SutonnyMJ, Font size: English 12, Bangla 13, line spacing: 1.00

Deadline: 15 February 2026

Assignments

Group A: 01, 03, 04, 10, 11,13, R-09,, R-32,

1. Attach all the previous BCS and other govt. job`s MCQ questions, on this course contents and locate answers and explanation in details and what should be more for next exams?
2. Find BCS written exam questions on this topic and write down the answers.
3. General features and Characteristics of Medieval Inscriptions and coins.

Group B: 02, 06, 07, 12, 16, 18, 19, 25, 27, R-13 R-33, R-39, (R-22 Liza)

1. Importance/Role of Inscription and Coins together to reconstruct the Socio-Political, Cultural and socio economic medieval history.
2. Limitations and Scope for using the Inscriptions and coins to reconstruct the history of Medieval Bengal.

Group C: If needs

Types of Epigraph

Epitaph

Coin Epigraphy

Rock Inscription

Terracotta inscription

Paper inscription

Arms/ Coat of Arms

Seals

Signets

Pottery

Inscription on Guns and Swords

Other Terms

Paleography

Greek Epitaphs in Troy



Presentation Topic for Epigraphy

Origin and development of Medieval coinage system according to literatures. Cat-A-3p:

1.

Size and shape evolution

Writing evolution

Script evolution

Praise of the ruler's/ Designation evolution

2.

Coin type`s evolution

Story

Others if found



Nabil



Nishat Tasnim Meghla

Presentation Topic for Epigraphy

3. Origin and Development of Medieval Epigraphy according to findings. Cat-B- 3p

4.

Material`s evolutions

Writing/Script/Style evolution

Inscribing Objectives evolution

Plotting spot (in-situ/ex-situ- pick of the arch/mihrab etc.) evolution

5.

Story or background (if)

Others if find



Firuz Al Ferdous



Didarul Alam Tanvir

Presentation Topic for Epigraphy

6. Background of Medieval Epigraph and Coinage system.----Nahida Akter Liza
7-15----

Try to decipher as a first discovery of the coin/Inscription and compare it with scholars' translation and explanations.

- a.
- b.
- c.
- d.
- e.
- f.
- g.
- h.
- i.

Presentation Topic for Epigraphy

Take this coin/inscription and analyze its features and characteristics
16-20---

- a.
 - b.
 - c.
 - d.
 - e.
20. Newly discovery/Deciphered inscription in the 21st century: Make an interpretation on the basis.
21. Non Muslim instance in Medieval coin and epigraphy: analyze the socio-cultural aspects.

Extracted information from Inscription

Title/Appreciation:

"Sultan Shamsuddin Abul Mujaffar Firuz Shah the great Sultan" (715 AH, Bihar Sharif, Patna) - "السلطان شمس الدين أبو المظفر فيروز شاه السلطان العظيم"

Envoy Sultan of Delhi also inscribed inscription with their own title. "الخان العظيم" للخاقان المهيّب، الخاقان الجليل، حامي مجد الحق والإيمان، المدافع عن الإسلام والمسلمين، نصير للبلات المهيّب، "السلطان والسلطنة، هذا السلطان أبو الفتح طغرل" -

The great Khan of the dignified court, the illustrious Khagan, the protector of the glory of truth and faith, the defender of Islam and Muslims, the helper of the Sultan and the Sultanate, this Sultan Abul Fattah Tughril." (1142 AH, Iajuddin Tughril Tugan Khan)

الخان الكريم، المحارب الشهير، ابن السلطان، تاج الحق وليد حاتم خان.

"The benevolent Khan, the famous warrior, son of the Sultan, Tajul Haq Walid Hatim Khan"

Extracted information from Inscription

Designation:

Medieval Inscription shows different kind of designation and professional title such as-

- Official designation
- Appraisal title
- Genealogical title



Extracted information from Inscription

Designation: Official Designation

*Shehzada, Uzir, Diuan, Kotoali,
Tenderer, Jamadar, Jangdar, Sher-
Laskar, Sher-e Khel, Sher-e-
Gumostah, Mimar, Kaji Dastar, Mir
e bahar, Al-khajan, Mahalian etc.....*



Extracted information from Inscription

Designation: appraisal title

*Gaus-Ul-Islam, Mugis al mulk, Oal
Salatin, Muin al mulk oal salatim,
Naseh al mulk oal salatin, Saheb al
Saif oal kamal, Khosru jaman,
Khaja Jahan, Hatim al thani, Sikdar
thani, Al gaji, Bohor al mani,
Sikdar thani, Ali janab, Sadat I sar
oa fakar-e-alai-taha, Banda-e-
Dargah etc*

গাউসুল আজম, কুতুব, পীরে কামেল, জিলানী,
ভূয়াপূরী, মাদানী, আজহারী, আলহাজ্জ,
ফুরফুরা, সুরসুরা,



Extracted information from Inscription

Saint/Sufi name in the inscription

Shah Jalal- 3 Inscription

Jalal Uddin Tabrizi Inscription

Alauddin Husen Shah inscribed
about Makhdum Sheikh akhi Siraj
Uddin, Hazrat Nur Kutub



Extracted information from Inscription

Artistic Excellence

Script style, Calligraphy and Other

Herb, leaf design such as Shams
Uddin Firuz Shah`s Incription.



Extracted information from Inscription

Geographical border info: expansion of Kingdom:

Toponymy: Toponyms- Place, Area,
Location

“Arsah Sazla Mongkahbad” mentioned in the Ruknuddin Barbak shah`s General Ulugh Ajmol Khan built mosque in 860 AH, Akso in Tribeni Zafar Khan Gazi Mosque, Might this was the same with ‘Satgaon’ inscriptional witness proved that it was in the Bardhwan district and Hugli.



Extracted information from Inscription

Town/Khana Lowbola:

It was found in various inscription
Satgaon inscription and others,
According to Blokhman it was the
same with Chabbish Pargana.

Extracted information from Inscription

Town Shimlabad: Toponymy

Fatih Shah inscription- The city shimlabad is identified in the Damodor city, few miles away from south-east Bardhwan.

Arsha and Mahal or Hadigarh town:

Jalal Uddin Abul Muzaffar Fatih shah reign Ulugh Majlish e Nur inscribed Pargana or Town Hathigarh might this hathi garh at present is the same of Hadifarh that time.

Husainabad Town-Ruknuddin Barbak shah

Iklim Mubarakabad-Sultan Nasiruddin

Extracted information from Inscription

Iklīm-ইকলিম

Iklīm is the administrative unite of a kingdom like Pargana and present District.

Iklīm Mubarakabad: Sultan Nasiruddin Mahmud-Khaja-e-Jahan- 863 AH-Biggest Pargana of Dhaka

Iklīm Muajjamabad: Sultan Jalal Uddin Fateh Shah (1) and Alauddin Husen Shah (2)- Might it Sonargaon

Mahmudabad: Sultan Fateh Shah-Dr. A H Dani and Blochman, Gauda nearby

Arsa Shrihatta: Sultan Shamsuddin Firuj Shah-Might it Sylhet- Justified with another inscription Srihatta invading and victory indicated.

Extracted information from Inscription Mint

At least 37 mints have found
Muhammad bin Tughlaq-Sonargaon,
Satgaon

Alishah- Firuzabad (Gauda)

Sikandar Shah- Firuzabad, Sonargaon,
Muazzamabad, Satgaon, Shahar-e-nao,
Aolistan or Arsa Kamru

Governor Yuzbek`s coin- Lakhnowti,
Nadia

**Alternative of Mint is 1. Khajana 2.
Dar-uj-Zarb**

মধ্যযুগের বাংলার সমাজ-সংস্কৃতি



Extracted information from Inscription Mint

At least 4 type of Mints: Central,
Mobile (ভ্রাম্যমান), Official,
Temporary mints/Takshal.



Extracted information from Inscription Social and Cultural

Benevolent works- Bridge
inscription

Mosque and Inspiration

Extracted information from Inscription Education

- One of the inscriptions of Sultan Ruknuddin Kaikaus reign (issued in 698 AH) give us the information to build a mosque by Zafar khan Gazi at Triveni.
- Hindu Muslim separate and independent education systems existed at the same time-Education Commission report 1883
- Sultan Jalal Uddin Muhammad Shah`s 3 line inscription found at Sultanganj, Rajshahi, written as “ if someone spends one dirham on study, it is equivalent to spending a pile of gold in the path allah” cited from Al Hadith.

Extracted information from Inscription Education

- Ikhtiar Uddin yuzbek (issued 652 AH found in Rajshahi)- A sacred building and it was a complex of Mosque, Madrasah and Khankah.
- Husen shah`s inscription shows a prove for establishing a Madarasah.
- 907 AH issued inscription was cited as Hadith as “If necessary, go as far as China to gain Knowlwdge”
- Nasiruddin Nusrat shah`s inscription of Sonargaon issued in 929 AH, according to the text of the inscription, Malik-ul-Uamara-al-Wazara as a chief lawyer and Shaikh or Hadith Teacher.
- Sultan Nasiruddin Mahmud Shah`s 858 AH issued inscription found Tarash, Pabna mentioned him as Alim and learned and reward/Gratuity doner to the students.

Extracted information from Inscription Social Structure

t

Extracted information from Inscription Language

Mughal inscription commonly was issued in Persian instead of Arabic.

But sultan Shamsuddin Firuz Shah (1301-22 AH), his Srihatta inscription is in Persian

Sultani inscriptions are mostly in Arabic and Persian.

Bakhtiar Khilji`s and Danujmardan Deva`s Inscription was in Ancient Bengali like Devnagari (one of the forms of old Bangla)

Extracted information from Inscription Expansion of Kingdom

- In the reign of Shamsuddin Firuz Shah, it has announcement of building to mosque on in Bihar in 709 AH and another one is in Choto Dargah of Bihar in 715 AH.
- According to coin`s text Kaikaus`s realm, supremacy was was centralized in Lakhnauti/Lakshmanavati,

Extracted information from Inscription Administrative structure

**Pargana, Iklm,
(Province/District), Khitta
(District), Arsa (Region/Town),
Baldatun (Town/city).**

Extracted information from Inscription Economical/Financial info

Currency weight system: Initially.
The weight was 177 grains or 11.6 g,
imitating Delhi, but later it was
reduced to 166 grains or 10.8 g.

Is it prosperity or downfall?

Precious metal: Coin making material
shows the prosperity or downfall. Like
if gold or silver or even Kouri....

Currency Value: Hamja Shah`s Full
Gold, Full Silver, Half Silver, Quarter
silver (Shiki) coin have found

Iliyas shah`s a 2 taka (**unit**)
equivalenced Gold coin and 1 taka
equivalenced Gold coin have found.

Extracted information from Coin Political history

- Sultan Balban inhibit/constrain or mitigated joint coin minting and issuing rebel between Sultan Yuzbek and Nasiruddin Mahmud in 1257 CE. But After 22-23 years later Governor Tugril declared himself Independent and issued a new coin in his own name.
- Declared independence refusing obedience of The great sultan of Delhi and adopted the title '*Sultanul Azam*'
- Again, constraining Tugril`s rebel, the great Sultan Balvan replace his own son Nasiruddin Mahmud Bogra khan as the governor.

Extracted information from Inscription Reign and Timeframe

Conquering the Gauda at 601 AH
(1205 CE), 19th Ramadan

Extracted information from Inscription
Skilled Artisan Society

T

Extracted information from Inscription Religious development and Sufism

T

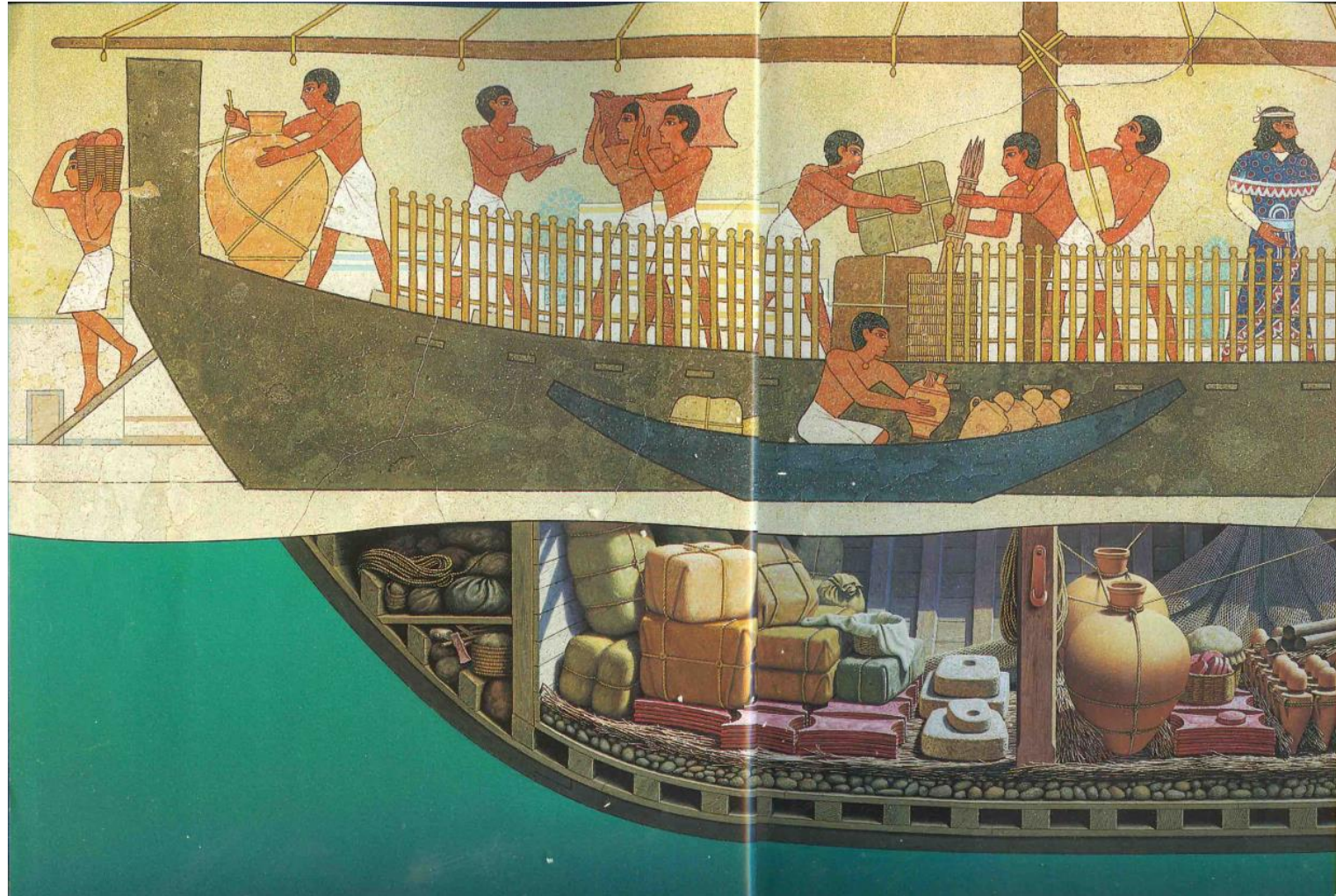
British Parliamentary debate on-
'Medieval period of Bengal was a communal or not'

Two group each side

Trade in Sultanate Period

Late broze age Trade in Anatolia and East thrace of Europe

According to Adam Smith, trade is an innate human propensity to "truck, barter, and exchange," driven by self-interest and facilitated by specialization (division of labor).



Trade in Sultanate Period

Late broze age Trade in Anatolia and East thrace of Europe

According to Adam Smith, trade is an innate human propensity to "truck, barter, and exchange," driven by self-interest and facilitated by specialization (division of labor).

Trade in Sultanate Period

Late broze age Trade in Anatolia and East thrace of Europe: Uluburun

The map shows the probable route of the ill-fated ship found at Uluburun off the south Turkish coast. Also indicated are likely sources of materials for the various artifacts found on board the wreck.



Trade in Sultanate Period

What was the Medium of Trade, Coin or Cowrie?

“Sultanate trade in Bengal was continuously in external trade, both maritime and overland. It also tells us that Bengal has valuable products to export, since it could not pay for its imports with precious metals mined locally” – John S. Deyel



Cowrie- East India Company faced a problem to regularize revenue collection for cowrie in Sylhet in 18th CE. Cowrie rather than Coin.

Much earlier in the 16th CE Abul Fazal`s Gazetteer of the Mughal empire says Orissa used the Cowrie as money.

In the same time Portuguese Mercant Tome Pires noted cowrie was used in Bengal as well.

Ibn Batuta noted, Bengal customers made major trade to Indonesia with cowrie.

Trade in Sultanate Period

Abbasid coin found in Shalvan Viahara may reflex some insight on Trade between Abbasid caliphate and Bengal.

Foreign tourist`s account showed many aspects of trade such as export and import from here to Indonesia, Afghanistan, middle east China and so on even through the Silk road.

According foreign accounts Bengal sultans exported some goods exchange of importing gold and Silver whereas Gold and silver was needed to make coins. Here our coin making raw materials was imported from China (H Roy).

Bengal`s Export products were rice, Maslin, Sugar, Pearls, Precious rocks, Horse, Colored pot, Horses jean, Spices etc.

Trade in Sultanate Period

Port name mentioned inscriptions and coins such Damodarpur and Kotalipara is mentioned as a trade center and meeting place of businessmen.

Trade in Sultanate Period

Women`s Contribution in Medieval Period

- Mosque Builder bibi Malati and an inscription after her name found in Sadullapur of Gauda.
- Sultan Razia and her reign.

Trade in Sultanate Period

Late broze age Trade in Anatolia and East thrace of Europe: Uluburun

“Sultanate trade in Bengal was continuously in external trade, both maritime and overland. It also tells us that Bengal has valuable products to export, since it could not pay for its imports with precious metals mind locally” – John S. Deyel

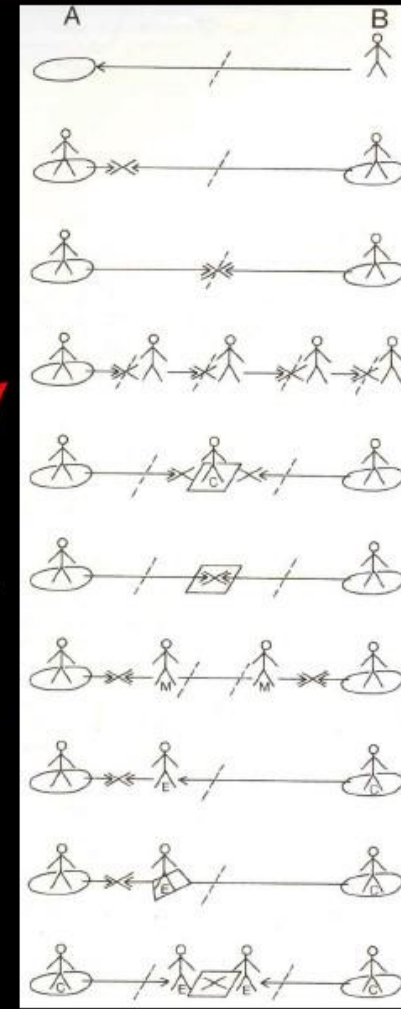
Trade in Sultanate Period

Late broze age Trade in Anatolia and East thrace of Europe



ARKE 6061- ESKİ ANADOLUDA TİCARET

Doç. Dr. A. Onur BAMYACI



d. Down-the-line-trade:

- Commodity is transferred through var. polities by diff. means of exchange:
E.g., Afghanistan: lapis lazuli → Egypt

Trade in Sultanate Period

Valuables and Commodities

Kind of Diplomacy

In gift exchanges, objects are of high-prestige, different to everyday commodities

Valuables tend to be in a limited range of materials, to which a particular society ascribes a high value.

Ceremonial exchanges are used to establish and reinforce alliances, while competitive exchanges are used to settle rivalries

Valuables and ordinary commodities are exchanged in separate spheres

Hediye alışverişlerinde nesnelere, gündelik mallardan farklı olarak yüksek prestije sahiptir

Değerler, belirli bir toplumun yüksek bir değer atfettiği sınırlı bir malzeme yelpazesinde olma eğilimindedir.

Törenselle değiş tokuşlar ittifakları kurmak ve güçlendirmek için kullanılırken, rekabetçi değiş tokuşlar rekabetleri çözmek için kullanılır

Değerli mallar ve sıradan mallar ayrı alanlarda değiş tokuş edilir

Question Pattern and Probable Questions

- Assignment topics
- Women contribution
- General features of coin and Inscription
- Problems and limitations
- Reconstructing the past based on Coin and Inscription
- Trade and Economy.
- Social exceptionality and Critique like women contribution, other religious participation in leadership.

Do you have any Questions?

Assignment & Presentation Topics

Differences among Inscription, Epigraph, Numismatic

Medium and Finding spot of Medieval Epigraph

Let`s search from the references what was those characteristics?

Merits and Demerits of Epigraphical Studies